



RU METAL

T R A D E

PRICELIST

Istocna radna zona blok 9/3, 22400 Ruma

Phone/fax: +381 22 431 012

+381 22 479 583

+381 22 431 399

E-mail: office@rumetaltrade.com

www.rumetaltrade.com

RU METAL

TRADE

CONTENT	
NAME OD PRODUCTS	PAGE
HEX BOLTS DIN 931-5.6 PARTIAL THREAD	1
HEX BOLTS DIN 931-8.8 PARTIAL THREAD	2
HEX BOLTS DIN 933-5.6 FULL THREAD	3
HEX BOLTS DIN 933-8.8 FULL THREAD	4
HEX BOLTS DIN 931-10.9 PARTIAL THREAD BLACK	5
HEX BOLTS DIN 933-10.9 PARTIAL THREAD BLACK	5
DIN 84 MACHINE SCREWS SLOTTED RECESS ZP	6
DIN 7985 MACHINE SCREWS PAN HEAD SLOTTED&PHILLIPS	6
DIN 965 MACHINE SCREWS FLAT HEAD PHILLIPS RECESS	7
TRUSS HEAD COMBI DRIVE MACHINE SCREWS	7
DIN 912-8.8 HEX SOCKET CAP SCREWS BLACK	8
DIN 912-8.8 HEX SOCKET CAP SCREWS ZP	8
DIN 7991 - 10.9 HEX SOCKET COUNTERSUNK HEAD SCREW	9
DIN 7991 - 10.9 HEX SOCKET COUNTERSUNK HEAD SCREW	9
DIN 603 CARRIAGE BOLTS SQUARE NECK	10
DIN 7982 FLAT HEAD PHILLIPS DRIVE SELF-TAPPING SCREW	11
DIN 7981 PAN HEAD PHILLIPS DRIVE SELF-TAPPING SCREW	11
DIN 7504K HEX WASHER HEAD SELF DRILLING SCREWS	12
DIN 7504K HEX WASHER HEAD SELF DRILLING SCREWS CO	12
DIN 7504K LIH LIN HEX WASHER HEAD SELF DRILLING SCR	12
DIN 7504P FLAT HEAD PHILLIPS SELF DRILLING SCREWS Z	13
DIN 7504N PAN HEAD PHILLIPS SELF DRILLING SCREWS ZP	13
WAFEL HEAD SCREWS	14
WAFEL HEAD SELF DRILLING SCREWS	14
HANGER BOLTS WITH WOOD-METRICH HEAD	15
HANGER BOLTS WITH WOOD-WOOD HEAD	15
DIN 571 COACH SCREWS ZP	15
DIN 7505 CHIPBOARD SCREWS DOUBLE FLAT HEAD YZP	16
DIN 7505 CHIPBOARD SCREWS DOUBLE FLAT HEAD ZP	17
DIN 7505 CHIPBOARD SCREWS DOUBLE FLAT HEAD YZP - L	18
DIN 7505 CHIPBOARD SCREWS DOUBLE FLAT HEAD ZP - L	19
DRYWALL SCREWS BUGLE HEAD BLACK TWINFAST THREA	20
DRYWALL SCREWS BUGLE HEAD BLACK COARSE THREAD	20
DRYWALL SCREWS BUGLE HEAD BLACK METAL SELFDRI	20
WAFEL HEAD DRYWALL SCREWS	20
WINDOWS SCREWS ZP FLAT HEAD	20
CONFIRMAT SCREWS FLAT HEAD HEX RECESS WITH DEEP	20
BREAKABLE SCREWS	20
UNIVERSAL WALL ANCHORS GRAY	21
UNIVERSAL CRUMPLIING WALL ANCHORS	21
UNIVERSAL WALL ANCORS	21
ANCHORS FOR GYPSUM BOARDS	21
AIRCRETE ANCHORS	21
ANCORS FOR FACADES	21
WEDGE ANCORS WITH HEX NUT AND FLAT WASHERS	22
METAL FRAME ANCHORS -ECOFIX-	22
FLAT HEAD SQUARE NECK BOLTS BLACK	22
CONCRETE SCREWS WITH 5 NIBS UNDER HEAD	22

RU METAL

TRADE

CONTENT	
NAME OD PRODUCTS	PAGE
NYLON HAMMER FIXINGS YZP	23
DROP IN ANCHORS	23
ANCHORES WITH SELF-EXPANDABLE WEDGE	23
HEX NUTS	24
HEX CONNECTION NUTS	24
HEX NYLON LOCK NUTS	24
CAP NUTS	24
WING NUTS	25
HEX THIN NUTS	25
HEX NUTS WITH FINE THREAD	25
HEX NUTS MARK: S10 BLACK	25
HEX NUTS WITH FLANGE	25
TEE NUTS	25
FLAT WASHER DIN125A	26
FLAT WASHER DIN9021	26
SPRING WASHERS	26
FLAT WASHERS WOOD CONST.	26
EPDM WASHERS	26
SERRATED WASHERS	26
THREAD RODS 1 METER LONG	27
THREAD RODS 2 METER LONG	27
THREAD RODS 3 METER LONG	27
THREAD RODS 8.8	27
LIFTING EYE BOLTS DIN 580	28
LIFTING EYE NUTS DIN 582	28
COTTER PINS DIN 94	28
WIRE ROPE CLIPS DIN 741	28
HOSE CLAMPS	28
BUILDING BOLTS WITH HEX NUT AND WASHER	28
TURN BUCKLES DIN 1480	28
PLUGS FOR PIPES	29
C-HOOK WOOD SCREWS	29
SQUARE BEND HOOK WOOD SCREWS	29
HOOK	29
SPRING TOGGLE ANCHORES WITH DOUBLE NUTS AND WA	29
SPRING TOGGLE ANCHORES WITH BOLT	29
SPRING TOGGLE ANCHORES WITH C-HOOK	29
SPRING TOGGLE ANCHORES WITH O-HOOK	29
BLIND RIVETS AL	30
BLIND RIVETS FE	30
BLIND RIVETS CU	30
BLIND RIVETS STAINLESS STEEL	30
BLIND RIVETS COLOUR	30
BLIND RIVETS (AL) BROADHEAD	30
FURNITURE ANGLE	31
BUTT HINGES	31
LATCHES	31
FLAG HINGES	31

RU METAL

T R A D E

CONTENT	
NAME OD PRODUCTS	PAGE
ROWELS FOR SLIDING GATE EMBEDDED	32
ROWELS FOR SLIDING GATE WITH PORTER	32
ROWELS FOR SLIDING GATE BEARING	32
TRACTORS FOR SLIDING GATE	32
SUPPORT WITH TRACTORS 220X35X4	32
SLIDING TROLLEY 2 WHEELS	32
SLIDING TROLLEY 4 WHEELS	32
SHUTTER DOOR SNAPPER	32
BOWLING BALL HANDRAIL	32
HINGES	32
HINGES WITH THE BALL	32
CONSTRUCTION NAILS	33
ROOFING NAILS	33
BLUE NAILS	33
"U" STAPLE NAILS	33
SPIRAL NAILS	33
CHAINS	34
WIRE ROPES	34
DRILL BITS FOR METAL	35
DRILL BITS FOR CONCRETE	35
DRILL BITS FOR WOOD	36
DRILL BITS FOR TIMBER	36
CUT-OFF AND FLAP DISCS	37
ELECTRODES	38
WELDING WIRES	38

RU METAL

TRADE



HEX BOLTS DIN 931-5.6 PARTIAL THREAD								
	M 6	M 8	M 10	M 12	M 14	M16	M 18	M 20
40			11.2500			30.0000		
45			12.2500					
50	3.8507	6.5605	13.2500	17.6300	25.1900	32.7400		
55			14.1000					
60	4.4212	7.5588	15.1000	20.1500	28.9600	37.7800	52.0000	
65	4.9917		16.1000			40.3000		
70	5.5622	8.6998	17.1000	22.6700	32.7400	41.5600	58.0000	76.0000
80	5.9900	9.6981	20.0000	25.1900	37.7800	47.8500	65.0000	78.0800
90		10.8391	21.0000	28.9600	40.3000	51.6300	71.0000	85.6300
100	6.4827	13.8000	25.0000	30.2200	42.8200	57.9300	77.0000	91.9300
110			26.0000	32.7400				
120	9.6400	16.8000	27.7000	37.7800	50.3700	66.7400	83.1100	104.5200
130			29.6000	40.3000	54.0000	69.2600	91.0000	109.5600
140			31.8000	42.8200	56.9200	74.3000	95.7000	115.8500
150		22.0000	34.2000	45.9800	59.5600	78.0800	103.2600	125.9300
160			38.0000	48.0000	63.0000	95.0000	120.0000	150.0000
180				52.0000		105.0000	140.0000	170.0000
200						120.0000	160.0000	190.0000

Prices are expressed in euros per 100 pieces!

RU METAL

TRADE

HEX BOLTS DIN 931-8.8 PARTIAL THREAD								
	M6	M8	M10	M12	M14	M16	M18	M20
30		6.80						
40	3.84	7.29	13.00	18.10	28.20	32.00		62.00
45	4.23	8.50	14.00	19.50	29.00	35.84		
50	4.70	8.90	15.00	21.01	30.10	39.60	52.00	67.00
55	5.03	9.27	16.06	23.00	33.80	44.00		73.00
60	5.31	10.13	17.50	24.60	34.80	45.10	58.08	74.15
65				26.57	37.50	48.20		80.00
70	5.67	10.75	19.50	27.80	38.60	50.67	65.00	82.80
75				29.00		57.80		90.00
80	6.55	12.00	22.00	30.80	42.02	56.80	71.00	90.21
90	7.19	13.59	24.20	34.00	46.96	62.80	82.80	98.86
100	8.40	14.83	26.50	37.40	51.30	67.97	86.50	108.00
110		17.05	29.00	39.60	58.00	74.20	90.00	119.87
120	10.50	19.30	30.00	43.25	60.55	77.85	94.00	124.81
130			33.37	45.72	64.00	82.80		141.00
140		21.00	36.00	49.43	67.97	87.74		142.11
150		25.00	39.00	53.80	74.80	97.00	115.00	150.76
160			50.00	57.50		102.57	170.00	165.00
170						120.00		210.00
180			55.00	62.00	99.00	113.70	190.00	180.42
200			88.00	71.00	119.00	126.05	210.00	205.00
220						200.00		280.00
250						280.00		390.00

HEX BOLTS DIN 931-8.8 PARTIAL THREAD						
	M22	M24	M27	M30	M33	M36
60	96.00	130.99				
65						
70	103.00	135.93	242.00			
75						
80	115.00	145.00	245.00	310.00		
85		190.00				
90	130.00	160.00	290.00	330.00		
100	145.00	170.00	292.00	350.00	790.00	
110		190.00	310.00	400.00		
120	160.00	195.00	320.00	420.00	890.00	730.00
130		250.00	370.00	440.00		
140	190.00	220.00	380.00	460.00	990.00	810.00
150	200.00	240.00	390.00	480.00	1050.00	855.00
160	250.00	260.00	440.00	530.00	1100.00	900.00
170				600.00		
180	280.00	290.00	470.00	550.00	1200.00	990.00
200	310.00	310.00	500.00	600.00	1300.00	1080.00
220		430.00	650.00	800.00		
240		450.00	700.00	850.00		
260			750.00	900.00		

Prices are expressed in euros per 100 pieces!

RU METAL

TRADE

HEX BOLTS DIN 933-5.6 FULL THREAD									
	M4	M5	M6	M 8	M 10	M12	M 14	M 16	M 18
10	0.9000	1.3000	1.8300	3.5000					
12	1.0000	1.3500	1.8300	3.9900					
16	1.0500	1.4500	1.7700	3.3400	7.4100				
18					6.3000				
20	1.2000	1.5000	1.8200	3.6500	6.4300	9.9000			
25	1.3500	1.7000	2.0300	4.1400	7.4100	10.1300	19.0000	22.0000	
30	1.8300	2.0000	2.2900	4.6300	8.0300	11.3700	17.0000	23.4800	
35	1.9000	2.3000	2.4900	5.0700	9.0200	12.9800	18.2000	24.7200	
40	2.1000	2.4500	2.7200	5.3800	9.1400	13.8400	20.5000	27.4300	37.1000
45		2.8000	3.0200	5.9900	9.8900	15.0800	22.5000	28.4200	
50	2.4000	3.0000	3.2200	6.4300	11.0000	15.8200	23.5000	30.8900	42.0000
55			3.5000	7.0400	11.7400	16.1900	25.0000	32.7500	
60		3.8500	3.6900	7.4100	12.6000	17.9200	26.9400	34.6000	47.0000
65						19.5000		37.0700	
70		4.2000	4.5100	8.4000	13.5900	20.1400	30.2800	38.3100	52.0000
80			4.7400	9.3300	15.5700	22.4900	32.7500	43.2500	55.6000
90			5.3200	10.2600	16.5600	24.7200	34.6000	46.9600	63.0000
100			5.7800	11.1200	17.7900	25.9500	38.3000	50.6700	65.5000
110					20.5000	29.0000			
120			7.3000	13.1000	21.0100	31.5100		63.0000	79.0000
130					26.0000				



EX BOLTS DIN 933-5.6 FULL THREA		
	M20	M24
10		
12		
16		
18		
20		
25		
30		
35		
40	45.8000	
45	50.5000	
50	51.9000	
55	57.0000	
60	58.0800	94.0000
65	62.5000	
70	64.2600	103.0000
80	70.4400	115.0000
90	77.8500	120.0000
100	85.2700	133.0000
110		
120	99.0000	
130		

Prices are expressed in euros per 100 pieces!

RU METAL

TRADE

HEX BOLTS DIN 933-8.8 FULL THREAD							
	M5	M6	M8	M10	M12	M14	M16
10	1.33	1.98	4.00				
12	1.46	2.02	4.20				
16	1.70	2.05	4.08	7.20			
20	1.93	2.35	4.51	7.79	14.21		
25	2.22	2.60	5.07	8.65	12.48		30.00
30	2.52	2.97	5.75	9.64	13.59	22.74	29.16
35	2.84	3.35	6.12	10.50	15.08	23.48	32.01
40	3.18	3.67	6.55	11.49	16.44	24.84	32.75
45	3.40	3.75	7.50	12.23	17.92	27.19	34.60
50	3.77	4.23	7.97	13.22	19.15	28.42	37.07
55		4.50	8.50	14.50	20.50	31.50	41.00
60	4.37	4.90	8.90	15.20	21.25	32.38	41.40
65					24.00	35.50	46.00
70		5.50	10.13	16.93	24.47	36.21	46.34
75							51.00
80		6.20	11.55	19.15	27.19	39.54	51.28
85							55.00
90		7.20	12.48	20.64	29.66	43.25	55.61
100		7.40	14.50	22.61	32.38	46.96	60.55
110				33.00	42.00	64.00	90.00
120		9.00	20.00	36.00	45.00	67.00	100.00
130				47.00	48.00	71.00	115.00
140			33.00	50.00	52.00	76.00	130.00
150			35.00	52.00	56.00	85.00	145.00

HEX BOLTS DIN 933-8.8 FULL THREAD						
	M18	M20	M22	M24	M27	M30
40	47.00	56.00				
45	49.00	59.00				
50	50.00	63.00	116.00	110.00		290.00
55		66.00				
60	55.00	70.50	126.00	116.00	240.00	310.00
65		74.00	132.00			
70	58.08	77.90	137.00	126.00	260.00	340.00
75		94.00				
80	64.26	85.27	147.00	132.00	280.00	370.00
85		105.00				
90	70.00	92.70	163.00	142.00	300.00	400.00
100	74.15	98.86	174.00	156.00	320.00	430.00
110		130.00		220.00		
120	95.00	140.00		230.00		
130		170.00				
140		180.00				
150		200.00				

Prices are expressed in euros per 100 pieces!

RU METAL

TRADE



HEX BOLTS DIN 931-10.9 PARTIAL THREAD BLACK

	M8	M10	M12	M14	M16	M18	M20	M24
40		19.00	30.50					
50	12.46	21.51	31.60	42.88	59.00	75.00		
60	14.09	24.78	37.24	49.55	66.61	83.53	107.12	
70	16.32	28.19	41.69	55.34	74.48	93.47	119.58	
80	18.10	31.60	45.10	62.02	82.34	103.85	132.04	225.51
90	20.33	35.01	49.70	68.00	90.20		143.91	247.76
100	24.78	39.46	54.15	72.25	100.44	124.62	158.01	270.76
110					109.49		169.13	293.31
120	31.01	45.10	63.20	84.57	118.47	146.88	186.19	304.59
130					124.03		197.32	327.14
140			83.00	102.00	130.85		210.97	338.49
150		62.02	86.94		142.13		227.88	360.96
160			91.00	117.00	163.64		248.21	394.94
170							270.00	
180			101.48	137.00	180.56		281.89	434.40
190							300.00	
200			117.00	154.00	191.83		310.08	462.59



HEX BOLTS DIN 933-10.9 FULL THREAD BLACK

	M8	M10	M12	M14	M16	M20
20	6.20	11.87				
25	6.99	12.98	18.06			
30	7.89	14.09	20.33	32.71	40.65	
35	8.80	15.28	21.51		45.10	
40	9.58	16.91	23.74	37.24	48.51	82.00
45					51.93	
50	11.05	19.14	29.38	42.00	56.38	93.00
60	13.30				63.20	104.00

Prices are expressed in euros per 100 pieces!

RU METAL

TRADE

DIN 84 MACHINE SCREWS SLOTTED RECESS ZP					
	M3	M4	M5	M6	M8
5	0.4190				
6	0.4190	0.6150	0.9740		
8	0.4190	0.6670	1.0260		
10	0.4660	0.7180	1.1030	1.5900	2.8908
12	0.4890	0.7440	1.1790	1.6920	3.3155
14	0.5250				
16	0.5360	0.8460	1.3080	1.8210	3.5959
20	0.6060	0.9490	1.4620	2.0510	3.8764
25	0.6990	1.0770	1.6670	2.3330	4.2283
30	0.7690	1.2050	2.0000	2.7180	4.5803
35	0.8570	1.3330	2.2050	3.0000	4.9307
40	1.2890	1.6410	2.3850	3.3330	5.2828
45		1.9000	2.6670	3.5640	5.6333
50	1.3900	2.0186	2.8970	4.0260	5.9852
60		2.4079	3.2000	4.5900	6.6878
70				4.8000	8.0000



DIN 7985 MACHINE SCREWS PAN HEAD SLOTTED&PHILLIPS RECESS ZP					
	M3	M4	M5	M6	M8
5	0.4200				
6	0.4430	0.6990	1.0510		
8	0.4620	0.7220	1.1030		
10	0.5130	0.8150	1.1540	1.8210	4.0000
12	0.5380	0.8620	1.2560	1.8460	4.0430
16	0.5900	0.9550	1.4100	2.0510	4.2740
20	0.6530	1.0480	1.6150	2.3100	4.7360
22	0.7000	1.1200			
25	0.7180	1.1880	1.8720	2.6920	5.3130
30	0.7950	1.3040	2.0510	3.0000	5.8910
35	0.9100	1.4440	2.2820	3.2310	6.4680
40		1.5610	2.4870	3.5130	6.6990
45		1.6770		3.9490	7.3920
50		1.8400	3.0000	4.2050	7.9700
60			3.7180	4.8460	8.8940
70			4.1500	5.7000	9.9500

Prices are expressed in euros per 100 pieces!

RU METAL

TRADE



DIN 965 MACHINE SCREWS FLAT HEAD PHILLIPS RECESS ZP						
	M3	M4	M5	M6	M8	M10
6	0.3490	0.4430	0.6900			
8	0.3730	0.4890	0.6990			
10	0.4190	0.5120	0.7450	1.0020		
12	0.4430	0.5590	0.8380	1.1410		
16	0.4890	0.6750	0.9780	1.3040	2.5850	
20	0.5360	0.7690	1.2340	1.6300	2.8410	5.9400
25	0.6060	0.9080	1.3970	1.9100	3.3960	6.3800
30	0.6520	1.0250	1.5610	2.1660	3.9270	6.7760
35		1.1410	1.7470	2.3990	4.4120	7.8100
40	0.8380	1.4440	1.9560	2.6320	4.8510	8.8000
45		1.5840	2.1430	3.0740		
50	1.1790	1.6770	2.3060	3.2610	6.0060	11.1100
60	1.5090	2.1200	2.8880	3.8900	6.9300	
70			3.6000	4.4020	8.0850	
80			4.0000	4.8910	9.2400	
90			4.5000			
100			5.0000			

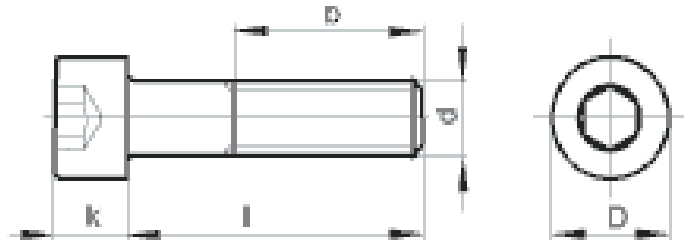


TRUSS HEAD COMBI DRIVE MACHINE SCREWS	
4x10	0.7690
4X12	0.8210
4x16	0.8970
4X18	1.2020
4X20	1.0000
4X22	1.0770
4X25	1.1790
4X30	1.2560
4X35	1.3590
4X40	1.6920
4X45	1.8200
4X50	1.9740
4X60	2.3080

Prices are expressed in euros per 100 pieces!

RU METAL

TRADE



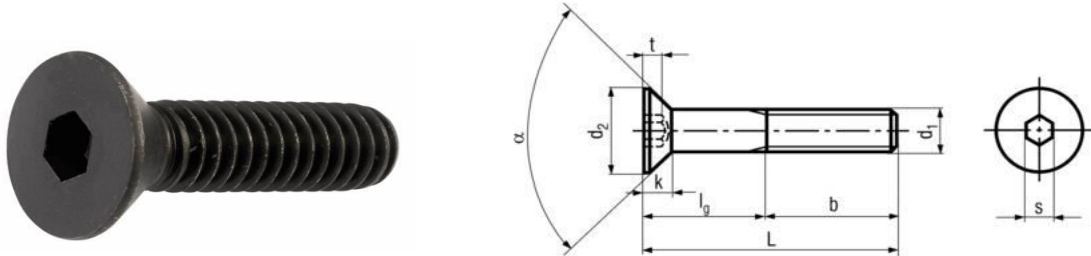
DIN 912-8.8 HEX SOCKET CAP SCREWS BLACK								
	5	6	8	10	12	14	16	20
10	1.5000	1.9500						
12	1.6200	2.1800						
16	1.7100	2.3300	4.6200	9.0000				
20	1.9700	2.6200	4.9900	9.1100	11.8500			
25	2.4200	2.9900	5.7400	9.3600	13.3500			
30	2.5800	3.6200	6.3600	10.3500	14.8500	18.8400	30.9400	
35	2.9800	4.2400	7.4900	11.3500	16.2200			
40	3.1900	4.4900	7.9800	12.8500	17.7100	22.8300	36.1800	62.0000
45	3.6300	5.1000	8.8600	14.0000				
50	3.8700	5.2400	9.3600	14.8500	21.4600	28.1900	40.2900	73.2300
60	4.9500	6.4900	10.8500	17.8400	24.2000	34.9300	45.6600	81.7100
70		7.4900	12.3500	20.3300	26.8200	40.2900	53.6400	88.7000
80		7.8600	13.8500	22.3300	29.5700	41.6700	59.1300	101.4200
90			15.3400	23.7000	33.5600		64.5000	108.4100
100		10.5000	16.8400	26.5700	37.6800	52.4000	69.8600	119.6400
120			20.0000	31.0600	45.6600		81.9600	135.1100
150				49.0000	68.0000			



DIN 912-8.8 HEX SOCKET CAP SCREWS ZP				
	6	8	10	12
16	2.7960	5.5440		
20	3.1440	5.9880	10.9320	
25	3.5880	6.8880	11.2320	
30	4.3440	7.6320	12.4200	
35		8.9880	13.6200	
40	5.3880	9.5760	15.4200	
45		10.6320		
50		11.2320	17.8200	
60		13.0200		
70		14.8200		
80		16.6200		

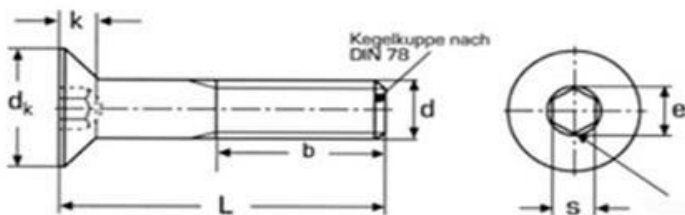
RU METAL

TRADE



DIN 7991 - 10.9 HEX SOCKET COUNTERSUNK HEAD SCREWS BLACK						
	5	6	8	10	12	16
10	1.84					
12	2.09	2.50				
16	2.50	3.34	6.26			
20	2.75	3.84	6.68	11.27		
25		4.34	7.18	11.68	18.36	
30		4.84	8.01	14.19	20.03	
35						
40		6.09	10.18	17.11	24.20	45.90
50		8.01	13.52	20.86	27.54	50.90
60			18.78	25.04	35.05	65.09
70			20.45	29.21	40.89	79.28
80			32.55		48.40	

DIN 7991 - 10.9 HEX SOCKET COUNTERSUNK HEAD SCREWS ZP				
	6	8	10	12
16	3.84	7.20		
20	4.41	7.68	12.96	
25	4.99	8.25		
30	5.57	9.21	16.31	23.03
35		10.56	18.23	25.91
40	7.01	11.71	19.68	27.83
50		15.55	23.99	31.67
60		21.60		
70		23.52		
80		37.43		



RU METAL

TRADE



DIN 603 CARRIAGE BOLTS SQUARE NECK					
	5	6	8	10	12
12		2.4500			
16	1.7750	2.6480	5.1000		
20	1.8840	2.9210	5.4600	8.7020	
25	2.1570	3.2760	5.7330	9.4150	
30	2.4020	3.6040	6.2790	10.2710	19.0000
35	2.6480	3.9310	7.0160	11.2000	20.0000
40	2.8940	4.2590	7.3710	12.1260	20.4000
45	3.2210	4.5590	7.9170	12.9820	22.0000
50	3.4130	4.9140	8.4630	14.9790	22.5400
55		5.3240	9.2820		
60	3.9040	5.5970	9.9650	15.8350	25.5350
70	4.4230	6.2790	10.9200	17.6890	27.6750
75			11.4660		
80	4.9000	6.9620	12.0120	19.5440	30.9560
90		7.6440	13.1040	21.6840	34.2370
100		8.4170	14.6940	23.3950	35.8060
110		9.2000	16.0000		
120		9.7010	16.9760	26.5340	39.6580
130		10.7000	18.5450	27.5000	
140		11.3000	19.6860	28.5000	
150		11.8400	20.6850	33.0000	49.0000
160			24.0000		
180			26.0000	40.0000	69.0000
200			32.0000	50.0000	76.0000
250				66.0000	

Prices are expressed in euros per 100 pieces!

RU METAL

TRADE



DIN 7982 FLAT HEAD PHILLIPS DRIVE SELF-TAPPING SCREWS FINE THREAD							
	M 2.9	M 3.5	M 3.9	M 4.2	M 4.8	M 5.5	M 6.3
6.5	0.4054						
9.5	0.4279	0.5630	0.6530	0.7210			
13	0.4054	0.6310	0.7210	0.8330	1.1490	1.3510	
16	0.5180	0.6980	0.8110	0.9230	1.2610	1.7340	2.2520
19	0.5860	0.7660	0.9010	1.0140	1.3960	1.8920	2.4550
22	0.6310	0.8330	1.0140	1.1260	1.5090	2.0500	2.6580
25	0.6760	0.9230	1.0810	1.2160	1.6440	2.1850	2.8830
32	0.7000	1.0590	1.2840	1.4190	2.0500	2.6580	3.4910
38	0.7500	1.3290	1.5770	1.7120	2.3200	3.1310	3.9640
45				1.9590	2.6130	3.3780	4.4590
50				2.1170	2.8600	3.6940	4.9000
60							5.2000
70							5.5000



DIN 7981 PAN HEAD PHILLIPS DRIVE SELF-TAPPING SCREWS FINE THREAD							
	M 2.9	M3.5	M3.9	M4.2	M4.8	M5.5	M6.3
6.5	0.3955	0.5050	0.6150				
9.5	0.4395	0.5710	0.7030	0.7690	1.1210		
13	0.4834	0.6370	0.7910	0.8570	1.2520	1.7140	2.1530
16	0.5493	0.7030	0.8570	0.9450	1.3620	1.8900	2.3510
19	0.5930	0.7690	0.9450	1.0330	1.4940	2.0440	2.5710
22	0.6370	0.8350	1.0110	1.1430	1.6040	2.1970	2.7910
25	0.6500	0.9230	1.1210	1.2300	1.7140	2.3290	3.0100
32	0.7000	1.0550	1.2960	1.4280	2.1090	2.8130	3.5600
38	0.7500	1.3180	1.5820	1.7580	2.3950	3.1420	4.0210
45			1.6500	1.9780	2.7030	3.5380	4.5480
50			1.7000	2.1530	2.9220	3.8010	4.9220
60					3.2200	4.5480	5.9110
70					4.5000	5.5000	6.6800
80					5.1000		
100					6.0000		

Prices are expressed in euros per 100 pieces!

RU METAL

TRADE

DIN 7504K HEX WASHER HEAD SELF DRILLING SCREWS					
	3.9	4.2	4.8	5.5	6.3
13		1.1900	1.5200		
16	0.9400	1.2300	1.5400	1.8000	
19	1.0000	1.2400	1.6200	1.8600	3.0100
22	1.0800	1.2400	1.7000	2.1200	3.2100
25	1.2300	1.3700	1.8600	2.2200	3.4700
32		1.5700	2.1400	2.6900	4.0400
35			2.2300		
38		1.7700	2.4100	3.1000	4.2800
45		1.8900	2.7000	3.5000	4.9000
50		2.0400	3.1000	3.8200	5.4800
60			3.4000	4.6600	6.2000
70			3.8100	4.7600	7.0700
80				5.9000	7.8900
90					8.5000
100					9.5200
110					10.3400
120					11.1500
140					13.3000
150					14.0000
160					15.4000
180					18.2000
200					21.6200



DIN 7504K COLORED WITH EPDM WASHER	
	4.8
32	3.9900
38	4.1600
50	4.9300

DIN 7504K HEX WASHER HEAD SELF DRILLING SCREWS - LIH LIN					
	3.9	4.2	4.8	5.5	6.3
13		1.3100	1.8000		
16		1.4200	1.9000		
19		1.5300	2.0000	2.6000	3.6000
22		1.6400	2.1500	2.7500	3.8000
25		1.7500	2.3000	2.9000	3.9000
32		2.0700	2.6000	3.7500	4.7000
35			2.8000		
38		2.3000	2.9500	3.9000	5.1000
45			3.2000		5.7000
50			3.6000	5.2000	6.2000
60			4.3000	6.0000	7.2000
70			4.8000	7.5000	8.5000
80				7.1000	9.6000
90				7.4000	11.3000
100					12.6000
110					14.0000
120				13.2000	15.8000
140					19.3000
150					22.7000
160					26.0000
180					39.6000
200					46.0000

Available in next colors:

silver RAL 9006
gray-white RAL 9002
gray-brown RAL 8019
red RAL 3009
blue RAL 5010
white RAL 9016
brown RAL 8017
green RAL 6005

4.8x50 only in colors:
silver RAL 9006
gray-white RAL 9002
white RAL 9016
brown RAL 8017

RU METAL

TRADE



DIN 7504P FLAT HEAD PHILLIPS SELF DRILLING SCREWS ZP							
	3.5	3.9	4.1	4.2	4.8	5.5	6.3
13	0.5700	0.6600					
16	0.6500	0.6770		0.7840	0.9030	1.2300	
19	0.6900	0.7010		0.9030	1.0340	1.3900	
22		0.7840		0.9600	1.2500	1.5400	
25		0.9500	0.8767	1.1170	1.3070	1.7400	
30			1.0249				
32		1.1880		1.3070	1.6040	2.0200	
35		1.2700	1.1607				
38		1.3200		1.5450	1.9010	2.4300	3.6000
40		1.4000					
45				1.7500	2.3400	2.8700	
50				1.9010	2.4360	3.5300	4.5800
60					2.9350	3.7200	5.4500
70					3.2550	4.9700	6.2100
80					3.8380	5.2800	7.0900
100					4.8000	7.7000	



DIN 7504N PAN HEAD PHILLIPS SELF DRILLING SCREWS ZP					
	3.5	3.9	4.2	4.8	5.5
13	0.6720	0.7200	0.8400		
16	0.7200	0.8280	0.9590	1.1990	2.0000
19	0.7800	0.9230	1.0550	1.3670	2.1200
22		0.9400	1.1000	1.5500	
25		1.1150	1.2830	1.5950	2.4700
32		1.3430	1.5110	1.9550	3.1800
38		1.7000	1.7510	2.2070	3.4100
45				2.6000	
50			2.1000	2.7820	4.2000
60				4.2000	
70				4.7600	
80				5.3200	
100				6.5000	

RU METAL

TRADE



WAFEL HEAD SCREWS	
	4.2
13	0.872
16	0.916
19	0.989
25	1.178
32	1.527
40	1.745
50	1.890



WAFEL HEAD SELF DRILLING SCREWS	
	4.2
13	0.960
16	1.047
19	1.236
25	1.410
32	1.745
40	2.006
50	2.326

RU METAL

TRADE



HANGER BOLTS WITH WOOD-METRICH HEAD

	M6	M8	M10
40	3.7400		
50	4.0700	5.2000	
60	4.5100	5.4200	
70	4.9830	6.0700	
80	5.5550	6.7200	11.4700
90	6.1160	7.4900	12.9200
100	6.3800	8.8600	14.5900
120		11.1100	17.4400
140		13.1700	20.8600
150		15.5000	23.5000
160		17.0000	25.0000
180		20.0000	33.0000
200		22.0000	35.0000

HANGER BOLTS WITH WOOD-WOOD HEAD

	M6	M8	M10
40			
50			
60	3.8500	7.0000	
70	4.7900	7.5000	
80	5.0500	8.4000	10.7000
90	5.9500	9.4300	11.8000
100	6.1600	10.9800	12.4000
120		13.4300	15.5000
140			
150			
160			
180			
200			

DIN 571 COACH SCREWS ZP

	M 6	M 8	M 10	M12
20	1.5000			
30	2.1900			
40	2.6500	4.8500		
50	3.1900	5.6500	10.0000	
60	3.6200	6.5100	11.6700	
70	4.0500	7.3700	12.9000	
80	4.7900	8.3500	14.7400	30.5000
90	5.1600	9.2100	15.9700	
100	5.7700	9.9500	17.2000	36.0000
110	6.5100	11.0000		
120	7.0000	11.9200	20.2700	41.5000
130	8.3000			
140	8.5400	13.5100		
150	9.2100	14.5000	24.5700	43.6000
160		15.7300		
180	11.6700	17.8100	29.4900	44.2300
200	15.0000	20.4000	33.1700	48.1600
220			34.5200	54.1800
250			41.1600	63.5200
300			55.9000	73.7100



RU METAL

TRADE



DIN 7505 CHIPBOARD SCREWS DOUBLE FLAT HEAD YZP						
	M3	M3.5	M4	M4.5	M5	M6
12	0.2930	0.3310	0.4900			
13		0.3560				
15		0.3820				
16	0.3440	0.4200	0.5090	0.6100		
17	0.3500	0.4250				
18	0.3560	0.4710	0.5600	0.6500		
20	0.4070	0.4960	0.5980	0.6740	0.8910	
25	0.4450	0.5600	0.6490	0.8400	1.0690	
30	0.5340	0.6230	0.7510	1.0180	1.2720	1.9080
35	0.5850	0.6360	0.8650	1.1710	1.4500	2.0990
40	0.6360	0.7380	0.9670	1.2720	1.5650	2.2900
45	0.8100	0.8650	1.0940	1.4630	1.7810	2.5450
50	0.9300	0.9540	1.2090	1.5400	1.9080	2.7990
55			1.4000			
60			1.4500	1.8450	2.2270	3.3080
70			1.6030	2.1380	2.5570	3.7530
80				2.5000	2.9260	4.1990
90					3.2440	4.7080
100					3.5630	5.2170
120					4.1990	6.4250
140						7.6980
150						8.2070
160						8.9060
180						10.3060
200						11.4510

Prices are expressed in euros per 100 pieces!

RU METAL

TRADE



DIN 7505 CHIPBOARD SCREWS DOUBLE FLAT HEAD ZP						
	M3	M3.5	M4	M4.5	M5	M6
12	0.2930					
13						
15						
16	0.3440	0.4200	0.5090			
17						
18	0.3560	0.4710	0.5600			
20	0.4070	0.4960	0.5980			
25	0.4450	0.5600	0.6490		1.0690	
30	0.5340	0.6230	0.7510	1.0180	1.2720	
35	0.5850	0.6360	0.8650	1.1710	1.4500	2.0990
40	0.6360	0.7380	0.9670	1.2720	1.5650	2.2900
45	0.8100		1.0940	1.4630	1.7810	
50	0.9300	0.9540	1.2090	1.5400	1.9080	2.7990
55						
60			1.4500	1.8450	2.2270	3.3080
70			1.6030	2.1380	2.5570	3.7530
80					2.9260	4.1990
90					3.2440	4.7080
100					3.5630	5.2170
120					4.1990	6.4250
140						7.6980
150						8.2070
160						8.9060
180						10.3060
200						11.4510

Prices are expressed in euros per 100 pieces!

RU METAL

TRADE



DIN 7505 CHIPBOARD SCREWS DOUBLE FLAT HEAD YZP - LIH LIN						
	M3	M3.5	M4	M4.5	M5	M6
12						
13						
15						
16	0.3784	0.4535	0.5451			
17						
18			0.5847			
20	0.4286		0.6423			
25			0.7276		1.1987	
30	0.5769	0.6774	0.8176		1.3627	
35		0.8153	0.9446			
40		0.8547	1.0636	1.3521	1.7955	2.6565
45			1.1748			
50		1.0372	1.3252	1.6353	2.1525	3.2025
55						
60			1.7199	2.0374	2.6250	3.5933
70			2.0110		3.0450	4.0987
80					3.4927	4.8105
90					3.9028	5.4720
100					4.7460	6.1837
120					6.0593	7.8877
140						9.8537
150						11.0523
160						12.5950
180						17.6303
200						20.6414

Prices are expressed in euros per 100 pieces!

RU METAL

TRADE



DIN 7505 CHIPBOARD SCREWS DOUBLE FLAT HEAD ZP - LIH LIN						
	M3	M3.5	M4	M4.5	M5	M6
12	0.3670					
13						
15						
16	0.3784	0.4535	0.5451			
17						
18	0.4065	0.4763	0.5847			
20	0.4286	0.5054	0.6423	0.8559	1.1200	
25	0.4975	0.5847	0.7276	0.9303	1.2028	
30	0.5769	0.6774	0.8176	1.0227	1.3632	
35		0.8153	0.9446	1.1672	1.5267	
40		0.8547	1.0636	1.4012	1.6525	
45			1.1748	1.4589		
50		1.0372	1.3252	1.6553	2.1525	3.2025
55						
60			1.7199	2.0945	2.6250	3.5933
70			2.0110		3.0450	4.0987
80					3.4927	4.8105
90						5.4720
100					4.7460	6.1837
120						7.8877
140						9.8537
150						
160						13.2777
180						18.5617
200						21.7263

Prices are expressed in euros per 100 pieces!

RU METAL

TRADE



DRYWALL SCREWS BUGLE HEAD BLACK			
	TWINFAST THREAD	COARSE THREAD	METAL SELFDILLING
3.5x25	0.7040	0.7040	0.9540
3.5x35	0.9100	0.9100	1.2330
3.5x45	1.1010	1.1010	1.5120
3.5x55	1.3210	1.3210	1.7000
4.2x75	2.3000	2.3920	
4.2x95		3.2300	

WAFEL HEAD DRYWALL SCREWS	
	3.5
9.5	0.8250
11	0.8800



WINDOWS SCREWS ZP FLAT HEAD	
4.1x22	0.60
4.1x25	0.70
4.1x30	0.75
4.1x35	0.85
4.1x40	0.95



BREAKABLE SCREWS	
4X45	2.90



CONFIRMAT SCREWS FLAT HEAD HEX RECESS WITH DEEP HOLE ZP	
7X50	2.99
5X50	2.16

RU METAL

TRADE

UNIVERSAL WALL ANCHORS GRAY

Ø5	0.4830
Ø6	0.5565
Ø8	0.7665
Ø10	1.1235
Ø12	1.7640
Ø14	2.6775



UNIVERSAL WALL ANCHORS GRAY LONG

Ø8x80	4.40
Ø8x100	5.83
Ø10x80	5.50
Ø10x100	6.10
Ø10x120	8.40
Ø10x140	9.45
Ø10x160	12.70
Ø12x80	8.60
Ø12x100	11.38
Ø12x120	13.40
Ø12x140	13.86
Ø12x160	15.75
Ø14x140	15.00
Ø14x150	17.50
Ø14x160	19.50
Ø16x160	30.60



UNIVERSAL CRUMPLING WALL ANCHORS

Ø6	1.0710
Ø8	1.5330
Ø10	3.2130
Ø12	4.9350
Ø14	8.5260
ANCOR	5.2500



UNIVERSAL WALL ANCORS

Ø5	0.5250	Ø8x80	4.40
Ø6	0.9030	Ø8x100	5.83
Ø8	1.5330	Ø10x80	3.70
Ø10	2.1840	Ø10x100	4.15
Ø12	2.9610	Ø10x120	8.40
Ø14	4.2000	Ø12x120	13.40
		Ø14x120	15.70

ANCHORS FOR GYPSUM BOARDS

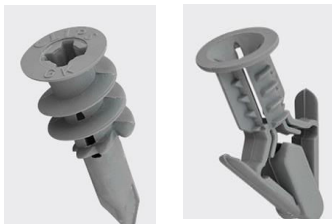
Ø14X32	6.70
Ø10X36	7.63
Ø25X50	33.50
Ø25X90	46.50

AIRCRETE ANCHORS

Ø10X50	12.50
Ø12X60	18.00

ANCORS FOR FACADES

Ø10X100	8.15
Ø10X125	10.00
Ø10X160	13.25

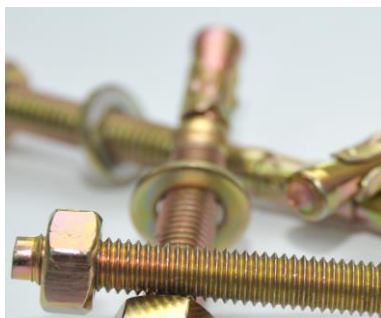


RU METAL

TRADE

WEDGE ANCHORS

6x50	11.50
6x65	13.50
6x85	16.00
6x100	19.00
8x65	14.81
8X70	16.00
8x80	16.49
8X85	18.00
8x95	18.93
8X100	19.90
8X115	22.30
8X120	22.90
8x150	29.00
10x60	22.40
10X80	25.49
10X90	27.00
10x95	27.93
10X100	28.90
10X120	33.12
10X150	39.69
10x180	46.56
10x200	60.00
12X80	39.00
12X100	41.21
12X120	48.08
12X135	54.19
12X150	58.00
12X160	62.00
12x180	70.21
12x200	76.32
12x220	110.00
12x240	120.00
12x250	130.00
16x100	79.37
16X105	80.00
16X120	88.84
16X140	100.00
16X150	106.85
16X160	115.00
16X180	125.17
16x200	134.32
16X220	165.00
16x240	187.00
16x250	215.00
20X125	155.00
20X150	168.97
20X160	180.00
20X180	191.56
20X200	221.33
20x220	285.00
20X250	340.00
20X300	395.00



METAL FRAME ANCHORS -ECOFIX-

10x72	13.13
10x92	15.39
10x112	17.65
10x132	19.91
10x152	22.46
10x182	26.97
10x202	29.52



LAT HEAD SQUARE NECK BOLTS BLACK

10x35	10.24
10x40	11.18
12x35	18.83
12x40	21.18
12x60	28.00



CONCRETE SCREWS T- WITH 5 NIBS UNDER

7.5X52	4.4400
7.5X72	6.3600
7.5X92	7.9900
7.5X112	9.6200
7.5X132	11.3900
7.5X152	13.6100
7.5X182	16.4200
7.5X202	18.0500
7.5X212	20.7100



Prices are expressed in euros per 100 pieces!

RU METAL

TRADE

NYLON HAMMER FIXINGS YZP	
5x30	1.8000
5x40	1.9500
6x40	2.0300
6x50	2.4100
6x60	3.0400
6x80	3.8000
6x100	5.7000
8x60	4.8200
8x80	5.9600
8x100	7.4800
8x120	9.8900
8x140	10.7700
8x160	14.0000
10x80	10.5000
10x100	12.0000
10x120	15.0000
10x140	17.0000
10x160	21.0000



DROP IN ANCHORS	
M6	5.31
M8	6.92
M10	11.25
M12	26.82
M14	42.26
M16	54.37
M18	70.00
M20	126.91

ANCHORE WITH SELF- EXPANDABLE WEDGE	
6x40	7.20
6x70	11.73



RU METAL

TRADE

HEX NUTS	
	JUS 601
	DIN934
M3	0.2070
M4	0.3330
M5	0.4600
M6	0.6600
M8	1.4000
M10	3.1000
M12	4.5900
M14	6.5400
M16	8.9600
M18	13.2000
M20	17.2200
M22	21.6600
M24	30.7700
M27	47.6600
M30	68.8900
M33	105.6300
M36	137.7800



HEX CONNECTION NUTS	
	DIN6334
M3	
M4	
M5	
M6	4.8500
M8	9.5500
M10	19.8200
M12	28.2300
M14	
M16	58.4600
M18	
M20	127.0000
M22	
M24	
M27	
M30	
M33	
M36	



CAP NUTS	
	JUS 627
	DIN1587
M3	
M4	1.5000
M5	1.6300
M6	2.0200
M8	3.6600
M10	7.9700
M12	12.4100
M14	20.9000
M16	24.8200
M18	
M20	57.6100
M22	
M24	
M27	
M30	
M33	
M36	



HEX NYLON LOCK NUTS	
	JUS 622
	DIN985
M3	0.7200
M4	0.7400
M5	0.8100
M6	1.0100
M8	2.1700
M10	4.8500
M12	7.1300
M14	10.6900
M16	14.2600
M18	22.8100
M20	28.5100
M22	49.9000
M24	62.7300
M27	118.0000
M30	210.0000
M33	
M36	



RU METAL

TRADE

WING NUTS	
	JUS 680
	DIN315
M3	
M4	2.7000
M5	2.8300
M6	3.6400
M8	4.5900
M10	7.4200
M12	14.8400
M14	
M16	
M18	
M20	
M22	
M24	
M27	
M30	
M33	
M36	



HEX THIN NUTS	
	JUS 604
	DIN936
M3	
M4	
M5	
M6	0.6000
M8	1.3900
M10	2.7000
M12	4.4000
M14	
M16	7.8000
M18	
M20	
M22	
M24	
M27	
M30	
M33	
M36	



HEX NUTS FINE THREAD	
	JUS 601
	DIN934
M10x1.25	3.7000
M12x1.25	5.0000
M12x1.5	5.0000
M14x1.5	8.3000
M16x1.5	11.1000
M18x1.5	15.8000
M20x1.5	21.5000



HEX NUTS MARK: S10 BLACK	
	JUS 601
	DIN 934
M8	2.22
M10	4.38
M12	6.52
M14	9.78
M16	13.04
M18	19.55
M20	24.77
M24	44.32
M30	96.00
M36	195.00



HEX NUTS WITH FLANGE	
	DIN 6923
M5	1.3000
M6	1.4700
M8	3.0800
M10	5.0000
M12	8.8000



TEE NUTS	
M5x8	2.70
M6x9	2.40
M8x11	3.40
M10x13	4.95



Prices are expressed in euros per 100 pieces!

RU METAL

TRADE



FLAT WASHERS	
	JUS 011
	DIN125A
M3	0.0932
M4	0.1330
M5	0.2000
M6	0.4100
M8	0.6540
M10	1.2070
M12	2.1250
M14	2.8500
M16	3.5900
M18	4.6500
M20	5.3100
M22	6.2400
M24	10.3600
M27	13.5400
M30	16.6000
M33	29.0000
M36	32.0000

FLAT WASHERS	
	JUS 014
	DIN9021
M3	0.2900
M4	0.3250
M5	0.5370
M6	0.9500
M8	1.9900
M10	3.9500
M12	6.7800
M14	9.6000
M16	12.4300
M18	20.4800
M20	23.5900
M22	32.0000
M24	41.9400
M27	71.0000
M30	105.0000
M33	
M36	176.0000

SPRING WASHERS	
	JUS 110
	DIN127B
M3	0.1062
M4	0.1365
M5	<i>0.1880</i>
M6	<i>0.3350</i>
M8	0.6430
M10	0.9380
M12	1.4100
M14	2.2400
M16	3.3500
M18	3.8900
M20	5.6300
M22	7.1000
M24	10.1800
M27	12.7300
M30	20.3700
M33	38.0000
M36	50.0000



FLAT WASHERS WOOD CONST.		EPDM WASHERS		SERRATED WASHER	
		METALNA ø28/8	1.40		JUS 151
		METALNA ø6	0.70		DIN6798
M3		GUMENA ø6	0.60	M3	0.5750
M4		RUBBER ø6	1.50	M4	0.6000
M5		RUBBER ø8	1.50	M5	0.8000
M6	2.2000	EPDM 4.2x14	0.85	M6	1.0000
M8	5.1000	EPDM 4.8x16	0.85	M8	1.3000
M10	7.2000	EPDM 5.5x16	0.85	M10	2.1200
M12	16.5000	EPDM 6.3x16	0.85	M12	3.0000
M14		EPDM 6.3X19	1.11	M14	3.5000
M16		EPDM 6.3X25	2.40	M16	4.5000
M18				M18	
M20				M20	8.7700
M22				M22	
M24				M24	
M27				M27	
M30				M30	
M33				M33	
M36				M36	



Prices are expressed in euros per 100 pieces!

RU METAL

TRADE

THREAD RODS 1 meter long		THREAD RODS 2 meters long		THREAD RODS 3 meters long		THREAD RODS 8.8	
	DIN975		DIN975		DIN975		DIN975-8.8
M3	0.3200	M3		M3		M3	
M4	0.3400	M4		M4		M4	
M5	0.4500	M5		M5		M5	
M6	0.4800	M6	0.8500	M6		M6	
M8	0.7800	M8	1.5700	M8	2.3400	M8	1.1800
M10	1.2000	M10	2.4000	M10	3.6000	M10	1.7900
M12	1.7400	M12	3.5500	M12	5.2200	M12	2.5900
M14	2.4300	M14		M14		M14	3.4000
M16	3.3400	M16	6.8000	M16	10.0200	M16	4.5800
M18	4.1400	M18		M18		M18	5.6600
M20	5.2000	M20	11.0000	M20		M20	7.0600
M22	6.5700	M22		M22		M22	11.0000
M24	7.9200	M24		M24		M24	10.5900
M27	10.7300	M27		M27		M27	15.5000
M30	13.1000	M30		M30		M30	17.9200
M33		M33		M33		M33	23.0000
M36	21.0000	M36		M36		M36	



Prices are expressed in euros per 1 piece!

RU METAL

TRADE

LIFTING EYE BOLTS DIN 580	
M8	55.00
M10	84.00
M12	125.00
M14	163.00
M16	185.00
M20	265.00



LIFTING EYE NUTS DIN 582	
M8	54.00
M10	78.00
M12	112.00
M14	146.00
M16	183.00
M20	263.00



COTTER PINS DIN 94	
2.5x28	0.67
2.5x36	0.70
3.2x32	0.95
3.2x36	1.02
3.2x40	1.10
4x40	2.02
4x50	2.45
4x63	3.00
5x40	3.38
5x50	4.00
5x56	4.16
5x63	4.76
6.3x56	7.04
6.3x63	7.56
6.3x71	7.95
6.3x80	11.00
8x80	16.43
8x100	19.50
10x100	33.50



WIRE ROPE CLIPS DIN 741	
3 mm	0.0990
4 mm	0.1030
5 mm	0.1160
6 mm	0.1260
8 mm	0.1670
10 mm	0.3260
11 mm	0.3500
12 mm	0.5000
13 mm	0.5710
14 mm	0.5890
16 mm	0.7480
19 mm	1.0200
20 mm	1.5000
22 mm	1.6320



BUILDING BOLTS WITH NUT AND WASHER	
1/2"x72	56.76

NUT 1/2"x13x22
WASHER 14x23.8x2.5

HOSE CLAMPS DIN 3017	
8-16	18.25
12-22	22.68
16-27	24.28
20-32	26.31
25-40	30.17
30-45	31.49
35-50	32.80
40-60	34.79
50-70	36.78
60-80	38.78
80-100	42.76
90-110	45.39



TURN BUCKLES DIN 1480	
M6	0.6100
M8	0.8100
M10	1.2900
M12	1.9500
M14	2.8000
M16	4.1500
M20	7.1500
M24	15.0000



Price for TURN BUCKLES and WIRE ROPE CLIPS are per piece!

RU METAL

TRADE

PLUGS FOR PIPES	
15x15	0.0140
16x16	0.0200
18x18	0.0205
20x20	0.0210
25x25	0.0265
30x20	0.0265
30x30	0.0353
35x35	0.0412
40x20	0.0338
40x30	0.0412
40x40	0.0544
40x60	0.0730
50x30	0.0576
50x50	0.0926
60x60	0.0950
1/2" ø22	0.0200
ø25	0.0238
3/4" ø28	0.0360
1" ø34	0.0382
5/4" ø42	0.0515
6/4" ø48	0.0618
ø60	0.0960

C-HOOK WOOD SCREWS	
3x25	0.0350
3.5x25	0.0430
3.5X30	0.0520
4X30	0.0550
4X40	0.0584
4X50	0.0625
4.5x60	0.0450
5X30	0.0625
5X40	0.0690
5X50	0.0637
5x60	0.0705
5x70	0.0580
6X40	0.0850
6x50	0.0920
6x60	0.0960
6x70	0.1100
6x80	0.1155
6x90	0.0950
8x80	0.2100
8x100	0.2400
10x90	0.3700



SQUARE BEND HOOK WOOD SCREW	
3x25	3.30
3.5X30	3.50
3.5X35	4.10
4x40	4.52
4x50	4.78
4.5x60	3.90
5x40	5.70
5x50	6.20
5x60	6.47
5x70	5.90
6x50	7.60
6X60	7.80
6X70	8.50
6x80	9.20
6X90	9.50
8X80	12.00
8X90	14.50
10x90	26.00



Prices for plugs for pipes and c-hooks are per piece!



HOOK	
3x25	6.00
3x30	6.40
3.5X30	6.50
4X40	8.30
5X50	10.50
6X50	11.00
6X60	11.40



SPRING TOGGLE ANCHORS WITH DOUBLE NUTS AND WASHER		SPRING TOGGLE ANCHORS WITH BOLT		SPRING TOGGLE ANCHORS WITH C-HOOK		SPRING TOGGLE ANCHORS WITH O-HOOK	
4x70	21.90	4x70	21.90	4x70	22.56	4x70	24.00
4x100	23.32	4x100	23.32	4x100	23.99	4x100	26.00
5x70	28.96	5x70	28.96	5x70	29.65	5x70	32.00
5x100	30.85	5x100	30.85	5x100	31.55	5x100	34.00

RU METAL

TRADE

BLIND RIVETS (AL)				
	3.2	3.9	4.8	6.00
6	0.7480	0.9760		
8	0.7600	1.0200	1.4450	
10	0.8110	1.0900	1.5840	3.3200
12	0.8370	1.1750	1.6730	3.4700
14	0.9300	1.3180	1.8250	
16	0.9760	1.3690	1.9010	3.6760
18	1.0200	1.4450	2.0280	
20		1.5590	2.2430	4.4360
25		1.6500	2.5350	4.6260
30		1.8500	2.8900	



BLIND RIVETS (FE)			
	3.2	3.9	4.8
6	1.4267	1.4016	
8	1.6039	1.9955	
10	1.6736	2.1058	2.7050
12	1.7433	2.1940	2.8908
14		2.2712	2.9768
16		2.4713	3.0870
18			3.3191
20		3.2965	3.5355



BLIND RIVETS (CU)			
	3.2	3.9	4.8
6	1.03	1.76	
8	1.07	1.88	
10	1.28	1.91	
12	1.33	2.06	



BLIND RIVETS STAINLESS STEEL			
	3.2	3.9	4.8
6	1.74	1.80	
8	1.80	1.88	
10	1.94	1.93	2.47
12	2.04	2.08	2.58
16			3.02

BLIND RIVETS (AL) BROADHEAD			
	3.2	4.0	4.8
10		2.2130	3.2390
12		2.4370	3.4640
16		2.7260	4.1050
20			4.2490

BLIND RIVETS COLOUR			
	3.2	3.9	4.8
8	0.9000		
10	0.9500	1.3800	
12		1.4800	

**AVAILABLE IN
COLORS:**

SILVER RAL 9006
WHITE RAL 9016
BROWN RAL 8017
GRAY-BROWN RAL 8019
RED RAL 3009
BLACK RAL 9005



RU METAL

TRADE

FURNITURE ANGLE	
20x20	0.0420
30x30	0.0440
40x40	0.0610
50x50	0.0860
60x60	0.1500
80x80	0.2850
100x100	0.3500



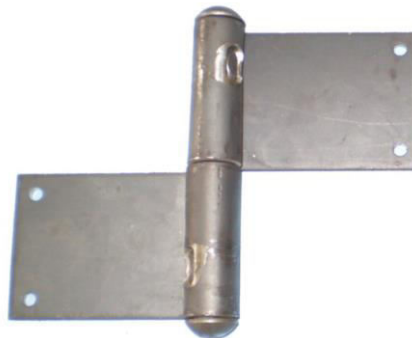
BUTT HINGES	
25x25	0.1150
30x30	0.1400
40x40	0.1650
50x50	0.2150
60x60	0.2200
70x70	0.2650
80x80	0.3000
100x100	0.5500



LATCHES		
DECORATIVE LACHES RMS 01/40		0.4500
DECORATIVE LACHES RMS 01/60		0.7500
DECORATIVE LACHES RMS 01/100		1.5500
DECORATIVE LACHES RMS 02/80		0.4800
LATCHES	RMS 03/60	0.4700
LATCHES	RMS 03/120	0.7700
LATCHES	RMS 04/200	1.4800
LATCHES	RMS 05/120	1.4600
LATCHES	RMS 06/120	1.3800
LATCHES	RMS 08/80	0.5100
LATCHES	RMS 12/150	1.3400
LATCHES	RMS 12/200	1.4700
LATCHES	RMK11/120	1.1200
LATCHES	RMK11/140	1.2800
LATCHES	RMK 11/160	1.3200



FLAG HINGES	
70mm-right	0.6500
70mm-left	0.6500
90mm-right	0.9150
90mm-left	0.9150



RU METAL

TRADE

ROWELS FOR SLIDING GATE	piece
EMBEDDED $\varnothing 60$	4.05
EMBEDDED $\varnothing 80$	5.05
WITH PORTER $\varnothing 60$	4.20
WITH PORTER $\varnothing 70$	4.75
WITH PORTER $\varnothing 80$	5.25
BEARING $\varnothing 60$	3.80
BEARING $\varnothing 70$	4.20
BEARING $\varnothing 80$	4.75



NAME	piece
TRACTORS FOR SLIDING GATE	1.00
SUPPORT WITH TRACTORS 220X35X4	3.00
SLIDING TROLLEY 2 WHEELS	6.20
SLIDING TROLLEY 4 WHEELS	8.50
SHUTTER DOOR SNAPPER	1.30
BOWLING BALL HANDRAIL	1.13



HINGES	piece
HINGES $\varnothing 8$	0.200
HINGES $\varnothing 10$	0.225
HINGES $\varnothing 12$	0.300
HINGES $\varnothing 13$	0.325
HINGES $\varnothing 14$	0.380
HINGES $\varnothing 16$	0.450
HINGES $\varnothing 18$	0.595
HINGES $\varnothing 20$	0.810
HINGES $\varnothing 22$	1.000
HINGES $\varnothing 25$	1.590
HINGES $\varnothing 30$	2.350
WITH THE BALL $\varnothing 18$	0.790
WITH THE BALL $\varnothing 20$	1.000
WITH THE BALL $\varnothing 22$	1.230
WITH THE BALL $\varnothing 25$	1.790
WITH THE BALL $\varnothing 30$	2.590



RU METAL

TRADE

CONSTRUCTION NAILS

<i>dimension</i>	<i>kg</i>
1.2x20	1.6700
1.4x20	1.4800
1.4x25	1.4800
1.6x30	1.4200
1.8x30	1.3200
1.8x35	1.3200
2.0x40	1.2400
2.2x50	1.1700
2.5x50	1.0900
2.8x50	1.0900
2.8x60	0.9900
2.8x70	0.9900
3.1x50	0.9900
3.1x60	0.9900
3.1x70	0.9900
3.1x80	0.9900
3.1x90	0.9900
3.4x50	0.9900
3.4x60	0.9900
3.4x70	0.9900
3.4x80	0.9900
3.4x90	0.9900
4.2x70	0.9900
4.2x80	0.9900
4.2x100	0.9900
4.2x120	0.9900
5x140	0.9900
5x150	0.9900
5x160	0.9900
6x160	0.9900
6x180	0.9900
6x200	0.9900
6x220	0.9900
7x240	0.9900



ROOFING NAILS

<i>dimension</i>	<i>kg</i>
1.6x16	1.5000
1.8x20	1.4100
2.5x25	1.3700



BLUE NAILS

<i>dimension</i>	<i>kg</i>
1.6x16	2.2100
1.8x20	2.1700



SPIRAL NAILS

<i>dimension</i>	<i>kg</i>
3.4x70	1.15



"U" STAPLE NAILS

<i>dimension</i>	<i>kg</i>
2.0x20	1.30
2.5x25	1.24
3.1x31	1.17



RU METAL

TRADE

CHAINS AND WIRE ROPES	DIMENSION	pak.	jm	PRICE
CHAIN DIN 5685	ø2.5	90m	m	0.43
CHAIN DIN 5685	ø3	60m	m	0.49
CHAIN DIN 5685	ø4	60m	m	0.83
CHAIN DIN 5685	ø5	45m	m	1.24
CHAIN DIN 5685	ø6	30m	m	1.72
CHAIN DIN 5685	ø7	30m	m	2.26
CHAIN DIN 5685	ø8	30m	m	2.80
CHAIN DIN 5685	ø10	15m	m	4.25
WIRE ROPE	ø2	100m	piece	11.20
WIRE ROPE	ø3	100m	piece	18.15
WIRE ROPE	ø4	100m	piece	26.35
WIRE ROPE	ø5	100m	piece	37.00
WIRE ROPE	ø6	100m	piece	45.55
WIRE ROPE	ø8	100m	piece	64.65
WIRE ROPE	ø10	100m	piece	86.80
WIRE ROPE	ø12	100m	piece	118.50
WIRE ROPE	ø14	100m	piece	155.00
WIRE ROPE	ø12	100m	piece	197.00



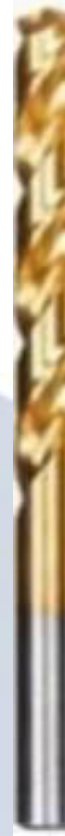
CHAINS AND WIRE ROPES	DIMENSION	pak.	jm	PRICE
CHAIN DIN 5685	ø2	90m	m	0.375
CHAIN DIN 5685	ø2.5	90m	m	0.430
CHAIN DIN 5685	ø3	60m	m	0.500
CHAIN DIN 5685	ø4	60m	m	0.900
CHAIN DIN 5685	ø5	45m	m	1.160
CHAIN DIN 5685	ø6	30m	m	1.990
CHAIN DIN 5685	ø7	30m	m	2.300
CHAIN DIN 5685	ø8	30m	m	3.000
CHAIN DIN 5685	ø10	15m	m	5.400
WIRE ROPE DIN 3055 - 6x12 + FC	ø2	100m	piece	8.500
WIRE ROPE DIN 3055 - 6x12 + FC	ø3	100m	piece	15.000
WIRE ROPE DIN 3055 - 6x12 + FC	ø4	100m	piece	21.000
WIRE ROPE DIN 3055 - 6x12 + FC	ø5	100m	piece	28.000
WIRE ROPE DIN 3055 - 6x12 + FC	ø6	100m	piece	36.000
WIRE ROPE DIN 3055 - 6x12 + FC	ø8	100m	piece	62.000
WIRE ROPE DIN 3055 - 6x12 + FC	ø10	100m	piece	105.000
WIRE ROPE DIN 3055 - 6x12 + FC	ø12	100m	piece	130.000

Prices are expressed in euros!

RU METAL

T R A D E

DRILL BITS FOR METAL HSS BLACK WHITE DIN 338	
DIMENSION	PIECE
1.0 mm	0.0980
2.0 mm	0.1050
2.5 mm	0.1820
3.0 mm	0.1910
3.2 mm	0.2070
3.5 mm	0.2130
3.8 mm	0.2170
4.0 mm	0.2200
4.2 mm	0.2300
4.5 mm	0.2700
4.8 mm	0.2780
5.0 mm	0.3030
5.5 mm	0.3680
6.0 mm	0.4600
6.2 mm	0.4900
6.4 mm	0.5000
6.5 mm	0.5030
7.0 mm	0.5310
8.0mm	0.7220
10.0mm	1.1390
10.5mm	1.3040
12.0mm	1.7340
13.0mm	2.0240
14.0mm	2.5850
16.0mm	3.6310
DRILL BITS FOR METAL long HSS BLACK WHITE DIN340	
DIMENSION	PIECE
2.0 mm	5.15
2.5 mm	6.62
3.0 mm	7.74
3.2 mm	8.48
3.5 mm	9.00
4.0 mm	1.12
4.2 mm	1.21
4.5 mm	1.27
5.0 mm	1.53
5.5 mm	1.62
6.0 mm	2.01
6.5 mm	2.02
8.0 mm	2.92
10.0 mm	4.83
12.0 mm	6.95



METAL HSS TITANIUM DIN 338	
DIMENSION	PIECE
1.0mm	0.1050
1.5mm	0.1110
2.0mm	0.1350
2.5mm	0.2000
3.0mm	0.2760
3.2mm	0.2870
3.5mm	0.2900
3.8mm	0.3030
4.0mm	0.3180
4.2mm	0.3790
4.5mm	0.3810
4.8mm	0.3930
5.0mm	0.4460
5.5mm	0.5290
6.0mm	0.6200
6.5mm	0.6640
7.0mm	0.7040
8.0mm	0.9700
10.0mm	1.6190
12.0mm	2.3020
13.0mm	4.0480
14.0mm	4.5000
DRILL BITS FOR CONCRETE 2.0	
DIMENSION	PIECE
5X110	1.1100
5x160	1.4000
6x110	1.1100
6x160	1.2700
8x110	1.4000
8x310	3.0200
8x400	3.0800
10x160	1.9500
10x210	2.1700
10x310	3.2200
10x350	3.7600
10x400	3.9300
10x600	5.4600
12x160	2.2300
12x210	2.6600
12x350	3.9400
16x160	3.9300
16x210	4.6200
16x310	6.3600
16x400	6.9700
16x600	9.7700
20x400	10.5100

DRILL BITS FOR CONCRETE 4.0	
DIMENSION	PIECE
5X110mm	1.1100
5X160mm	1.4000
6X110mm	1.1100
6X160mm	1.2700
6X210mm	1.6700
8X110mm	1.4000
8X160mm	1.5400
8X210mm	1.8300
8X260mm	2.6300
8X310mm	3.0200
8X400mm	3.0800
8X600mm	4.7400
10X110mm	1.8300
10X160mm	1.9500
10X210mm	2.1700
10X260mm	2.8200
10X310mm	3.2200
10X350mm	3.7600
10X400mm	3.9300
10X600mm	5.4600
12X160mm	2.2300
12X210mm	2.6600
12X260mm	3.2800
12X310mm	3.4400
12X350mm	3.9400
12X400mm	4.0500
12X600mm	5.4600
14X160mm	2.7900
14X210mm	3.5000
14X260mm	4.3700
14X310mm	4.5000
14X350mm	4.7200
14X400mm	4.8800
14X600mm	7.6800
16X160mm	3.9300
16X210mm	4.6200
16X260mm	6.1400
16X310mm	6.3600
16X350mm	6.7000
16X400mm	6.9700
16X600mm	9.7700
20X400mm	10.5100

Prices are expressed in euros per 1 piece!

RU METAL

TRADE

DRILL BITS FOR CONCRETE GOLD-SILVER	
DIMENSION	PIECE
4.00mm	0.50
5.00mm	0.72
6.00mm	0.80
8.00mm	1.00
10.00mm	1.33
12.00mm	2.10



DRILL BITS FOR WOOD	
DIMENSION	PIECE
3.0mm	0.29
4.0mm	0.35
5.0mm	0.37
6.0mm	0.43
8.0mm	0.55
10.0mm	0.75
12.0mm	1.32



LONG DRILL BITS FOR WOOD	
DIMENSION	PIECE
8x600	3.02
10x600	3.75
12x600	4.71
14x600	6.16
16x600	7.61



DRILL BITS FOR TIMBER	
DIMENSION	PIECE
8x400	3.00
10x400	3.15
12x400	4.45
14x400	5.28
16x400	5.92



RU METAL

TRADE



NAME	DIMENSION	PIECE
Cut-off wheel basic - inox	115x1	0.78
Cut-off wheel basic - inox	125x1	0.78
Cut-off wheel basic - inox	178x1.6	1.53
Cut-off wheel basic - steel	178x3	1.72
Cut-off wheel basic - steel	230x1.9	2.17
Cut-off wheel basic - steel	230x3	2.17
Cut-off wheel basic - steel	300x3.5x32	2.17
Cut-off wheel basic - steel	350x2.8x25.4	1.34
FLAP DISCS	115x40#	1.57
FLAP DISCS	115x60#	2.21
FLAP DISCS	115x80#	3.35
FLAP DISCS	115x120#	0.78
FLAP DISCS	125x40#	0.85
FLAP DISCS	125x60#	0.73
FLAP DISCS	125x80#	1.95



CUT-OFF AND GRINDING WHEELS FOR METAL	
DIMENSION	PIECE
115x1	0.45
125x1	0.48
115x3	0.54
180x3	1.25
180x1.6	1.06
230x3	1.90
230x2	1.70
300x3x25.4	3.28
300x3x32	3.28
350x3x32	4.04
115x6	0.98
180x6	2.20
230x6	2.96



L-DIAMOND CUT-OFF WHEEL	
DIMENSION	PIECE
115mm	3.62
125mm	3.93
180mm	8.88
230mm	14.20

L-DIAMOND CUT-OFF WHEEL TURBO	
DIMENSION	PIECE
115mm	4.96
125mm	6.10
180mm	9.90
230mm	16.22

FLAP DISCS	
DIMENSION	PIECE
115x40#	1.09
115x60#	1.09
115x80#	1.09
115x100#	1.09
115x120#	1.09

L-DIAMOND CUT-OFF WHEEL WAVY	
DIMENSION	PIECE
115mm	6.00
125mm	7.00
180mm	15.00
230mm	23.00

RU METAL

TRADE

ELECTRODES AND WELDING WIRES	
DIMENSION	kg
ELECTRODES 2.5 mm	2.25
ELECTRODES 3.2 mm	2.17
WELDING WIRE 0,6 5/1	3.30
WELDING WIRE 0,8 5/1	2.64
WELDING WIRE 0,8 15/1	2.48
WELDING WIRE 1,0 15/1	2.32
WELDING WIRE 1,2 15/1	2.23



ELECTRODES AND WELDING WIRES - GREEK	
DIMENSION	kg
ELECTRODES 2.0 mm	3.15
ELECTRODES 2.5 mm	2.45
ELECTRODES 3.2 mm	2.40
ELECTRODES 4.0 mm	2.40
WELDING WIRE 0,8 5/1	2.50
WELDING WIRE 0,8 15/1	2.25
WELDING WIRE 1,0 15/1	1.95
WELDING WIRE 1,2 15/1	1.85



ELECTRODES JADRAN	
DIMENSION	kg
ELEKTRODA 2.0 mm	2.90
ELEKTRODA 2.5 mm	2.50
ELEKTRODA 3.2 mm	2.50

